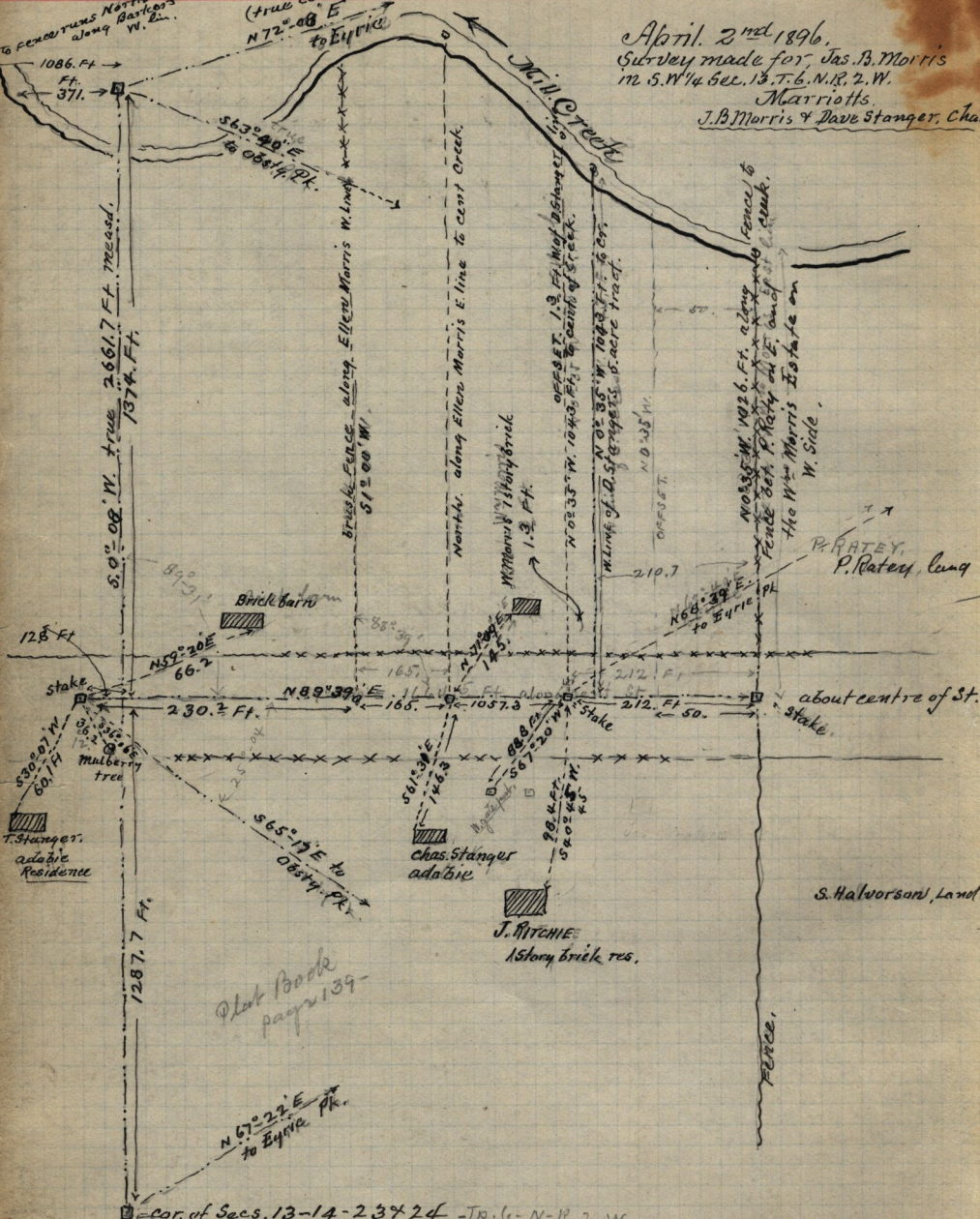


April 2nd 1896.
Survey made for Jas. B. Morris
in S.W. 1/4 Sec. 13, T. 6, N. R. 2, W.
Marriotts.
J. B. Morris & Dave Stanger, Chas.

To Fence runs North
Barbers
along N. 2.

(true course.)
N 72° 08' E
to Elyria



Plot Book
page 139

red wood post, 6" x 6" x 4 ft. long.
3 ft. in the ground, nail in to p. to mark
the cor. point, (in T. Fay's pasture)
see page 193.

See Book I - page 70.
" " D " 92